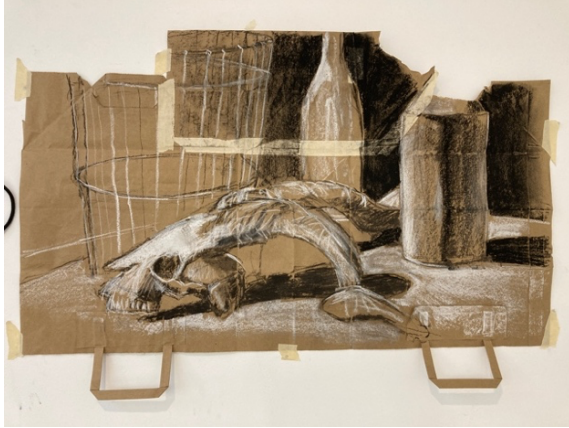


# Large Mixed Media Contemporary Drawing



with A-F Fulgence

16 & 17 May 2026

9:30am – 3:30pm

\$250 BDAS members \$300 non-members

Enjoy two full days working on large papers, under the tutelage of A-F Fulgence, generating expressive drawing based on **still life and the human figure**, using a variety of techniques and mediums. The workshop is designed to suit complete beginners, to more advance artists. It is intensive, messy, challenging, and very rewarding. Using traditional instruments like pencils, graphite, inked brushes, pen and ink, crayons, charcoal, pastels and chalk, finishing the whole artwork with an oil glaze. The result is often spectacular, and the process is so much fun!

A material list will be provided to you upon enrolment.

Anne-France was born in Morocco, studied in France, and migrated to Australia in 1989. A-F Fulgence is a highly talented local landscape painter and BDAS tutor. Her paintings demonstrate a mastery and deep understanding of the Australian landscape. A-F (as she prefers) has been professionally exhibiting her work for the past two decades, winning a string of art prizes and seeing her work collected by ARTBANK, numerous private buyers and regional art galleries. When she is not holed up in her studio, a converted dairy in Kangaroo Valley (NSW), A-F teaches art classes in Bowral, or leads artist expedition to far-flung locations such as Wilcannia, Flinders Island, Flinders Ranges and Morocco.



Website, Instagram and/or Facebook:  
[www.affulgence.com.au](http://www.affulgence.com.au)  
 @fulgenceaf (Instagram)

**To book into this workshop contact BDAS**  
**Ph: 4861 4093**  
**Email: [office@bdasgallery.com](mailto:office@bdasgallery.com)**

Bowral & District Art Society

Patron: Ben Quilty

**BOWRAL** ART GALLERY