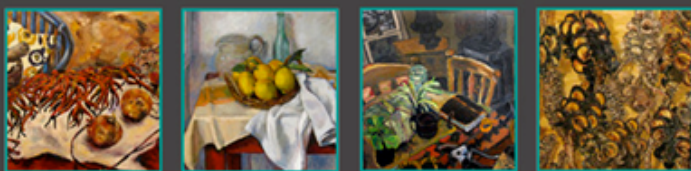


**B D A S**



## **2017 WINGECARRIBEE LANDSCAPE PRIZE**

**JUDGE: Gillian McCracken**

### **1<sup>st</sup> PRIZE**

**No: 8**

**A-F Fulgence**

*Un Rêve de Juin*

Judge's Comments: "Bold and moody – landscape as 'awesome'"

### **2<sup>nd</sup> PRIZE**

**No: 18**

**Robyn Kinsela**

**Easter Afternoon – Fowler's Gap**

Judge's Comments: "Reconceiving rugged outback landscape as delicate, dreamlike and ambiguous"

### **HIGHLY COMMENDED**

**No: 45**

**Lana Wilding**

*Golden Land*

Judge's Comments: "Colour palette muted and geological. Enlivened by lustrous pigment. An intense response to the possible hidden riches"

### **HIGHLY COMMENDED**

**No: 16**

**Gillian Day**

*Road to Tooborac*

Judge's Comments: "Spirited. Technique well selected for the treatment of this landscape"

**COMMENDED**

No: 19

Lee Bogart

*River "Ufemka"*

Judge's Comments: "Enticing vista – effective contrast of broad plains supporting intense but selective detail"

**COMMENDED**

No: 20

Elizabeth Burton

*Autumn Light*

Judge's Comments: "Mellow yet gutsy and a wonderful benevolent sky"

**COMMENDED**

No: 15

Rowan Robertson

*Hills & Trees, Riverina*

Judge's Comments: "Intense vignette – very successful at this scale"

**COMMENDED**

No: 50

Dorothy Freeman

*The Spirit of Nature*

Judge's Comments: "Successful use of intense palette, contrast and form"

**COMMENDED**

No: 1

Chris Alexander

*Hobart*

Judge's Comments: "Gutsy rendering – surprising departure from the more frequent 'postcard' images of the docks and mountain"